

# HORIZONTAL PREMADE BAGGER (CHPM-210 & CHPM-210E)



## FEATURES

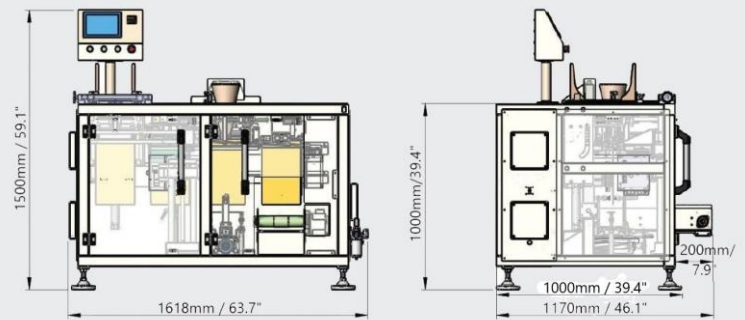
- Automatic 4 station Fill & Seal
- Vertical pouch feeding magazine
- Built-in vacuum pump for bag pick up
- Panasonic PLC & 7" color HMI (optional upgrade-Allen Bradley control system)
- #304 Stainless steel frame
- Interlock safety door

Model 210E

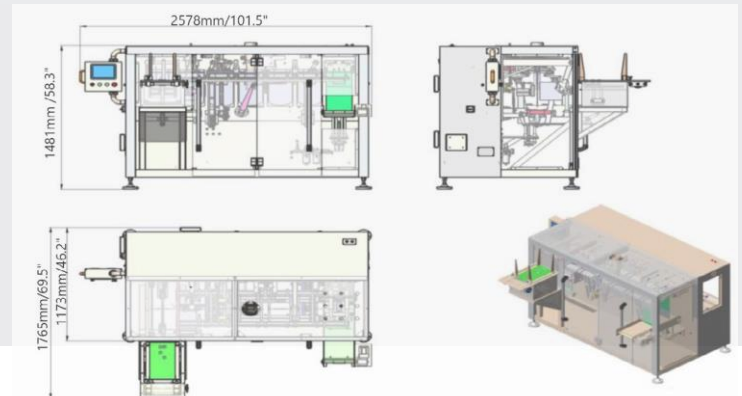


## SPECIFICATIONS

- Bag width: 100-210 mm (3.9" - 8.2")
- Vertical Bag length: 150-380 mm (5.9" - 14.9")
- Bottom gusset: 40-80 mm (1.5" - 3.2")
- Speeds are dependent on the product
  - Speeds: 25-50 ppm (210 model)
  - Speeds: 10-20 ppm (210E model)
- Bag style: flat bottom, stand-up pouch, zippered bags, semi and fully gusseted bags (210 model only)



Model 210



## OPERATING FEATURES



1  
Bag Pick Up

2  
Print Area

3  
Zipper  
Opening

4  
Bottom Bag  
Opening

5  
Two Filling  
Stations

6  
Bag Closing

7  
Heat Sealing

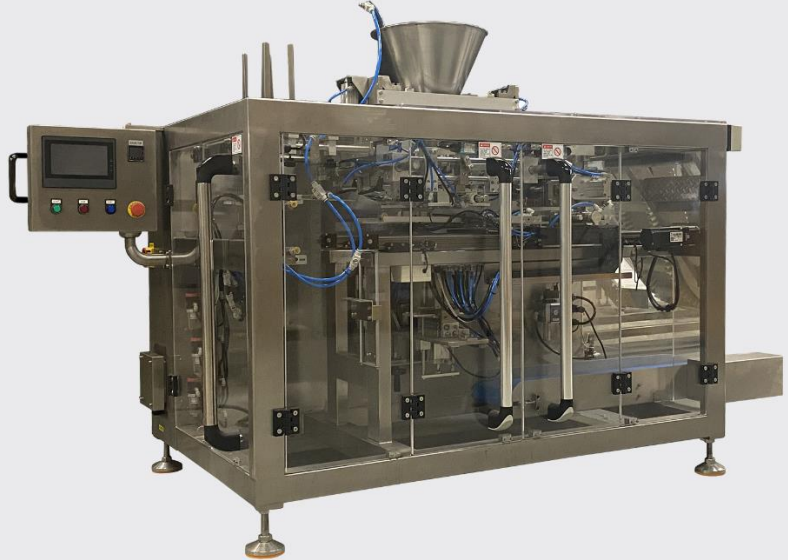
Model 210E combines  
#2 & #3 above

Model 210E has one  
fill station

# HORIZONTAL PREMADE BAGGER (CHPM-250G)

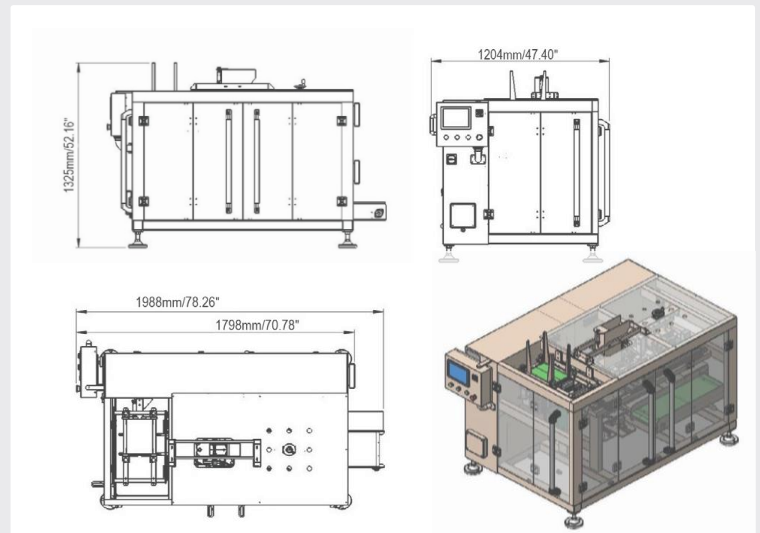
## FEATURES

- Automatic 3 station Fill & Seal
- Vertical pouch feeding magazine
- Built-in vacuum pump for bag pick up
- Panasonic PLC & 7" color HMI (optional upgrade-Allen Bradley control system)
- #304 Stainless steel frame
- Interlock safety door

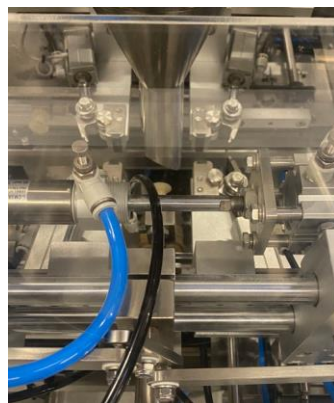


## SPECIFICATIONS

- Bag width: 100-250mm (4" - 9.8")
- Bag length: 150-400mm (5.9" - 15.75")
- Bottom gusset: 40-140mm (1.57" - 5.51")
- Speed: 8-15 ppm (dependent on product)
- Bag style: flat bottom, stand-up pouch, zippered bags and fully gusseted bags



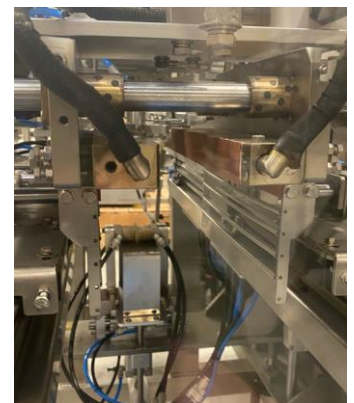
Vertical Pouch Magazine



Filling Station



Bag Opening



Heat Sealing